

OLÉLÉ MOLIBA MAKASI

(Intro)

O - le - le o - le - le mo - li - ba ma - ka - si.

On this page play each line twice

O - le - le, o - le - le mo - li - ba ma - ka - si.

Mbo - ka na ye, Mbo - ka na ye, mbo - ka, mbo - ka ka - sa - i.

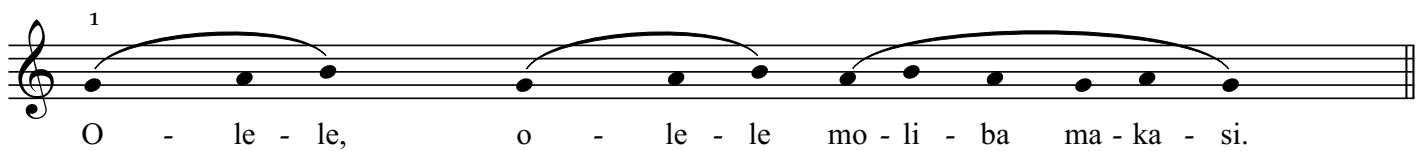
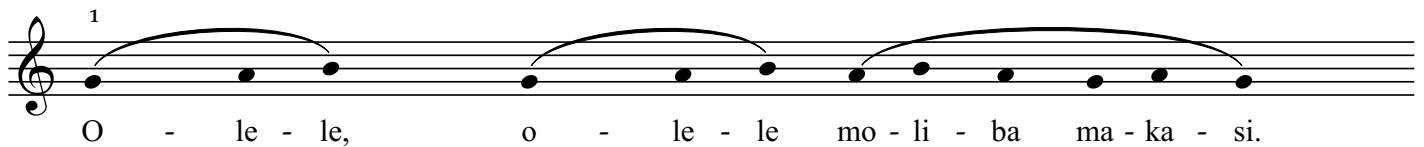
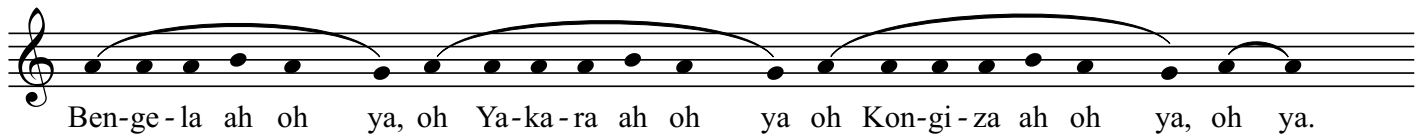
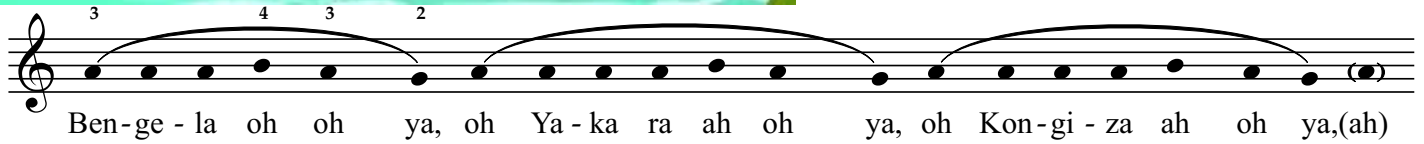
O - le - le, o - le - le mo - li - ba ma - ka - si.

E e o _____ e e e e o _____ Ben - gue - la a - ya.





On this page play stop repeating the lines



(Ending)

